



# Orwak 6040-HDC

## Benefits

- Savings on your waste collection
- Tidy premises
- Space saving

## Features

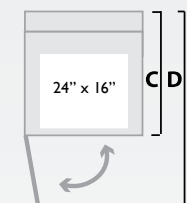
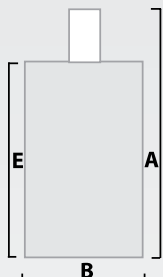
- Top loading
- High performance
- Multi strapping
- Small dense bales
- Cross strapping



Technical specifications

Dimensions 6040-HDC

- A: 7'2"
- B: 37"
- C: 46"
- D: 73"
- E: 43½"



**Loading aperture**

Width: 24"  
Depth: 16"

**Cycle time** 20 sec.

**RAM force** 22,000 lbs (57 p.s.i.)

**Bale size**  
Width: 24"  
Depth: 16"  
Height: 28"

**Bale weight**  
Cardboard: 120 lbs  
Plastic: 142 lbs

**Chamber dimension (internal)**  
Width: 24"  
Depth: 16"  
Height: 34"

**Weight (machine)**  
Total: 1,270 lbs

**Noise level** 72 db

**Protection class** IP 54

**Operating power**  
208V/3/60, 460V/3/60

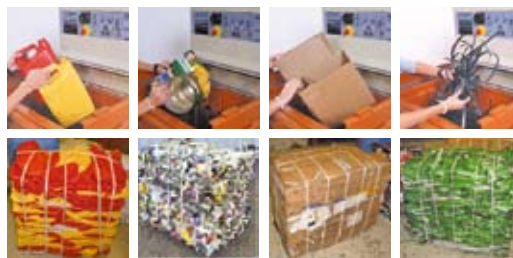
# Orwak 6040-HDC

## Small and strong

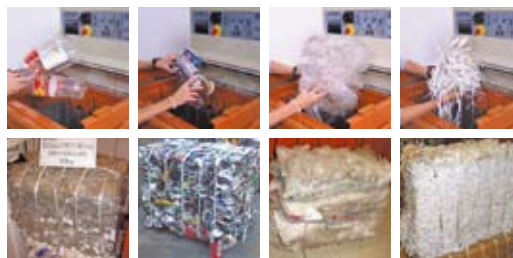
High-pressure. 59 lbs. per square inch. "Mini" baler for small and tight bales that can be secured by up to six straps including one cross strap. The machine can bale many tough materials like PET-bottles, tin/steel cans, plastic jugs, and containers, aluminium drink cans, paint cans etc.

Top loading with short cycle time: 20 sec. Includes all standard Orwak safety features. Developed with Orwak standard components.

High compaction ratio on minimal floor space. Easy to use bale dolly supplied with the machine.



Plastic jugs up to 100 lbs\* Steel/Tin/Paint cans up to 180 lbs\* Cardboard up to 120 lbs\* Plastic/Steel straps up to 130 lbs\*



PET-bottles up to 70 lbs\* Aluminium cans up to 50 lbs\* Plastic bags shrink films up to 150 lbs\* Shredded paper up to 110 lbs\*

\* Approximate weight of bale

The Orwak 6040-HDC takes care of most of your waste

- |   |   |   |
|---|---|---|
| <ul style="list-style-type: none"> <li>Paper</li> <li>● Cardboard</li> <li>● Shredded</li> <li>● Paper sacks</li> </ul>           | <ul style="list-style-type: none"> <li>Plastic foil</li> <li>● Shrink film</li> <li>● Plastic bags</li> </ul>       | <ul style="list-style-type: none"> <li>Semi-dry Waste</li> <li>Bagged general waste</li> </ul>          |
| <ul style="list-style-type: none"> <li>Metal Cans</li> <li>● Aluminium cans</li> <li>● Food cans</li> <li>● Paint cans</li> </ul> | <ul style="list-style-type: none"> <li>Plastic containers</li> <li>● PET bottles</li> <li>● Jugs/bottles</li> </ul> | <ul style="list-style-type: none"> <li>Wet</li> <li>Juice boxes, Tetra paks</li> </ul>                  |
| <ul style="list-style-type: none"> <li>Other metals</li> <li>● Steel straps</li> </ul>  | <ul style="list-style-type: none"> <li>Other plastics</li> <li>● Plastic straps</li> </ul>                          | <ul style="list-style-type: none"> <li>Special</li> <li>Steel drums</li> <li>Hazardous waste</li> </ul> |

● Perfect choice    ● OK    Other materials contact us

For more info. contact us or visit our website [www.orwak.us](http://www.orwak.us)  
We reserve the right to make changes to specifications without prior notice.  
Bale/bag/bin weights are dependent upon material type.

Orwak USA, LLC  
480 Lordship Boulevard, Stratford, CT 06615 USA  
Phone: 800.747.0449 or 203.447.8730  
Fax: 203.447.8786  
[sales.orwak@tomrana.com](mailto:sales.orwak@tomrana.com)



[www.orwak.us](http://www.orwak.us)